

Navigating the Future

Welfare, Skill, development and
Digitalization for Seafarers!



An aerial photograph of a busy port. A large container ship is docked at a pier, with several cranes visible. The ship's deck is covered with colorful shipping containers. In the foreground, a smaller tugboat is moving through the water, leaving a white wake. The background shows more of the port and some land.

Empowering Seafarers: Innovations in Welfare, Training, and Digital Transformation


1st CSN Northern European Crewing Conference
Hamburg, September 9, 2025

Captain George Papanelopoulos
Head of Vetting, Training & Development Dept.
Cyprus Sea Lines Co Ltd

Why This Matters

A large container ship is shown from a side-on perspective, sailing on a greyish-blue sea under a cloudy sky. The ship's deck is completely covered with a dense stack of multi-colored shipping containers in shades of blue, red, yellow, and white. The ship's hull is painted in light blue and red. The background shows a distant shoreline with trees and buildings under an overcast sky.

- ✓ Seafarers move 90% of global trade
- ✓ Post-pandemic, mental health & welfare gaps remain
- ✓ Technology is reshaping the crewing landscape
- ✓ This is a transformational moment for our industry



What Does Empowerment Mean?

- ✓ Voice: Involvement in decision-making
- ✓ Support: Access to welfare and family services
- ✓ Growth: Opportunities for training and development
- ✓ Respect: Recognition and fair treatment


Welfare – The Human Factor

- ✓ Mental health support & access to counselors
- ✓ Reliable internet for crew communication
- ✓ Transparent contracts and repatriation rights
- ✓ Access to shore leave and rest periods

A photograph of a modern ship's bridge, showing a wide array of electronic displays, control panels, and a large window overlooking the sea. The scene is brightly lit, suggesting a clear day. The text is overlaid on the center of the image.

Training – Skills for the Future

- ✓ Blended learning (simulators + e-learning)
- ✓ AI & automation awareness training
- ✓ Emphasis on soft skills: leadership, resilience
- ✓ Standardization across training centers

An aerial photograph of a port area, showing numerous stacks of colorful shipping containers in various colors (white, yellow, blue, red, green) arranged in neat rows. A large ship is docked at the bottom of the frame, with its deck visible. The background is a light, hazy sky.

Digital Transformation at Sea

- ✓ AI in crew scheduling and HR platforms
 - ✓ Remote monitoring & diagnostics
 - ✓ Digital documentation and compliance
- ✓ Opportunities vs. risk of job displacement

Finding the Balance

- ✓ Technology must enhance—not replace—human capability
 - ✓ Seafarer well-being remains the foundation of safety
- ✓ Cross-sector collaboration is essential



Bridge, Engine and Cargo Simulators

- ✓ Immersive, cloud-based maritime training
- ✓ Enables remote, continuous training
- ✓ Used by institutions in Europe, Asia, Middle East, Americas



Shaping Seafarers of the Future

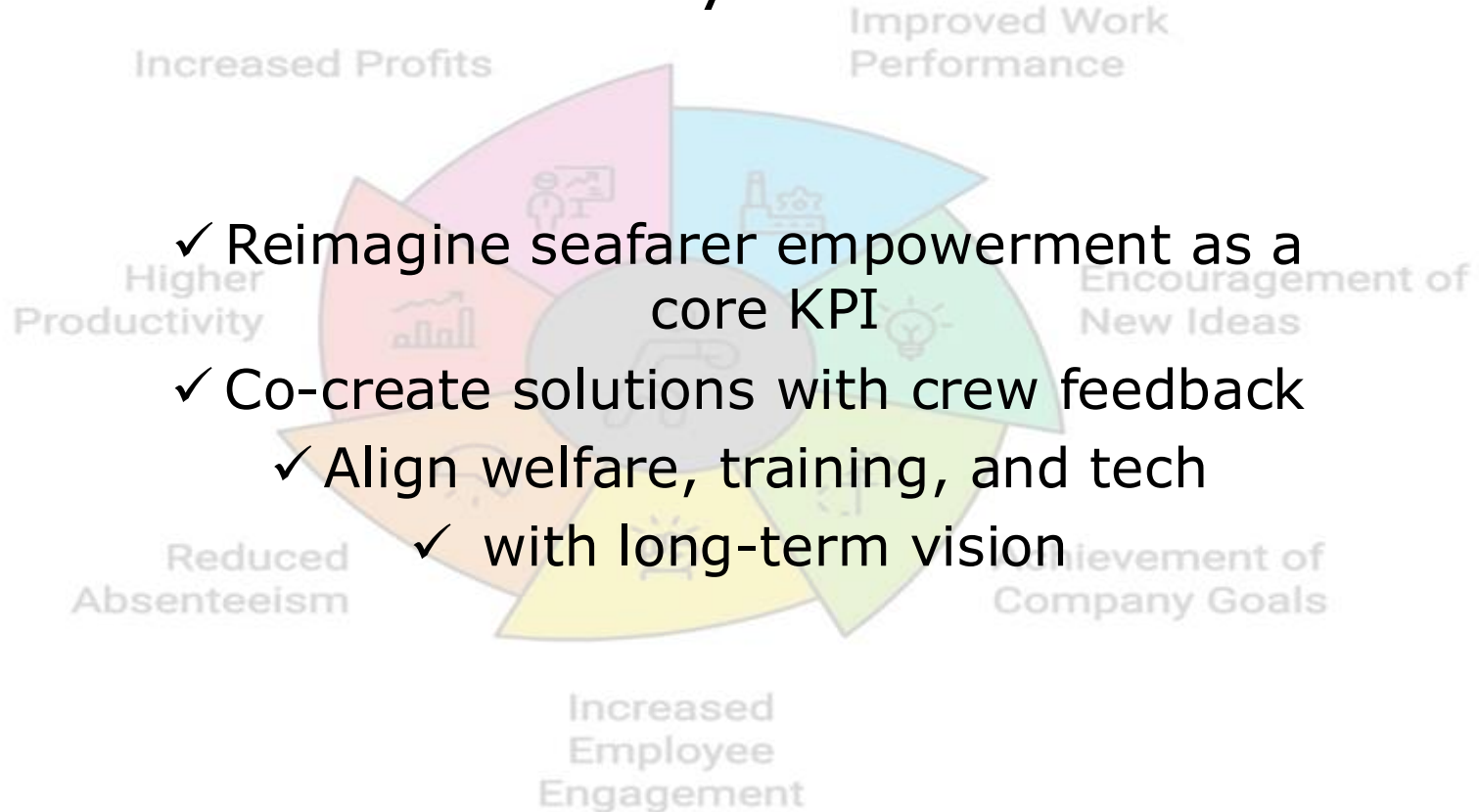


with Tomorrow's Tools
!Today!




Benefits of Employee Training and Development

The Way Forward



Thank You Need for Action

A large red cargo ship is sailing on the open ocean at sunset. The ship is viewed from an elevated angle, moving towards the right. The water is a deep blue, and the sky is a mix of orange and yellow. The ship has several yellow masts and a white funnel.

- ✓ Let's build a resilient, respected, and future-ready maritime workforce

- ✓ Thank you
See you in the panel discussion!