



The influence of geopolitical factors on the equilibrium of the maritime supply chain.

Viewing the world through a diplomatic lens.

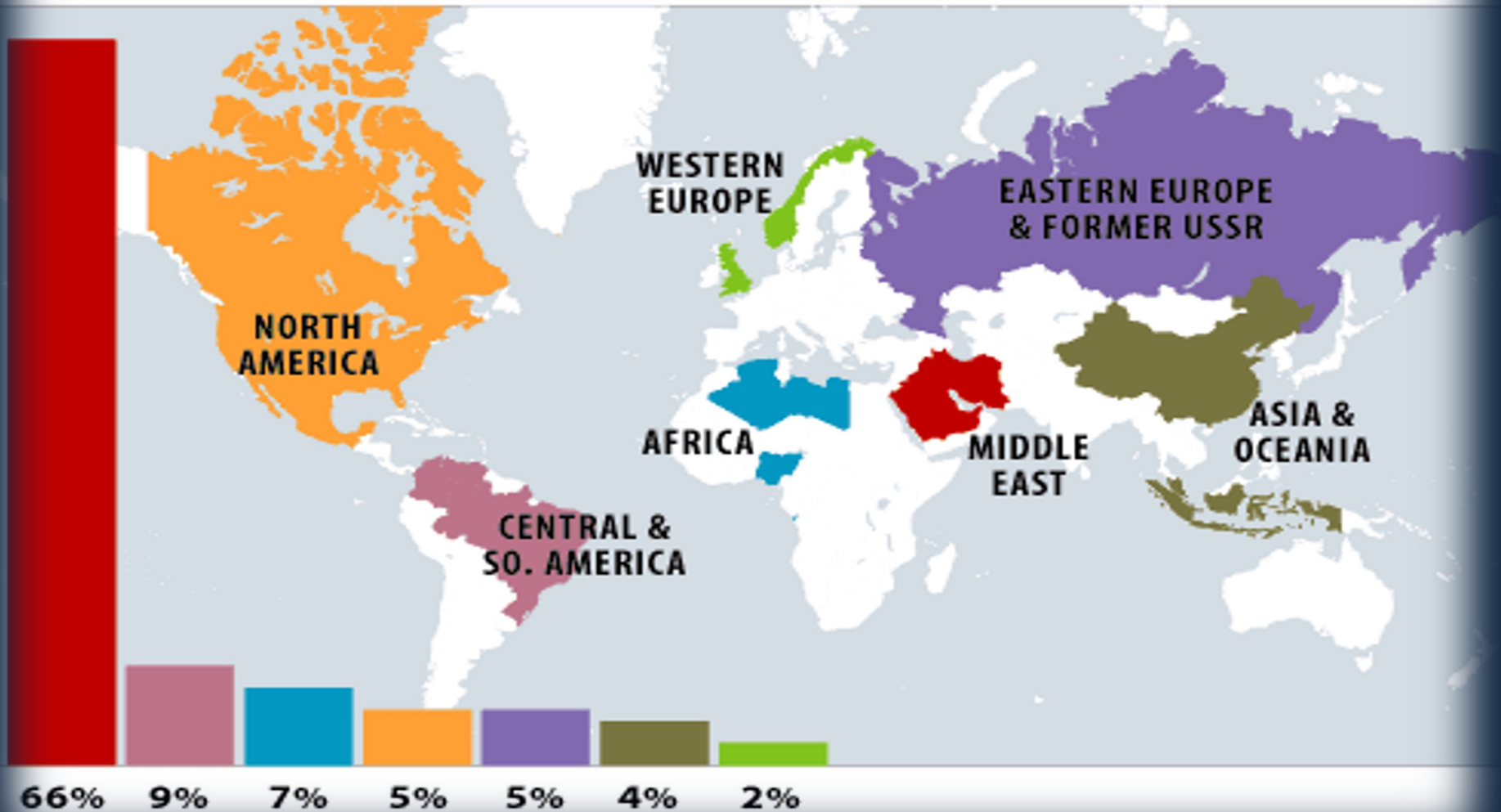


Mackinder's 1904
Conception of the
Heartland Thesis

Viewing the world through a diplomatic lens.



Where Are the World's Oil Reserves?





Viewing the world through a diplomatic lens.

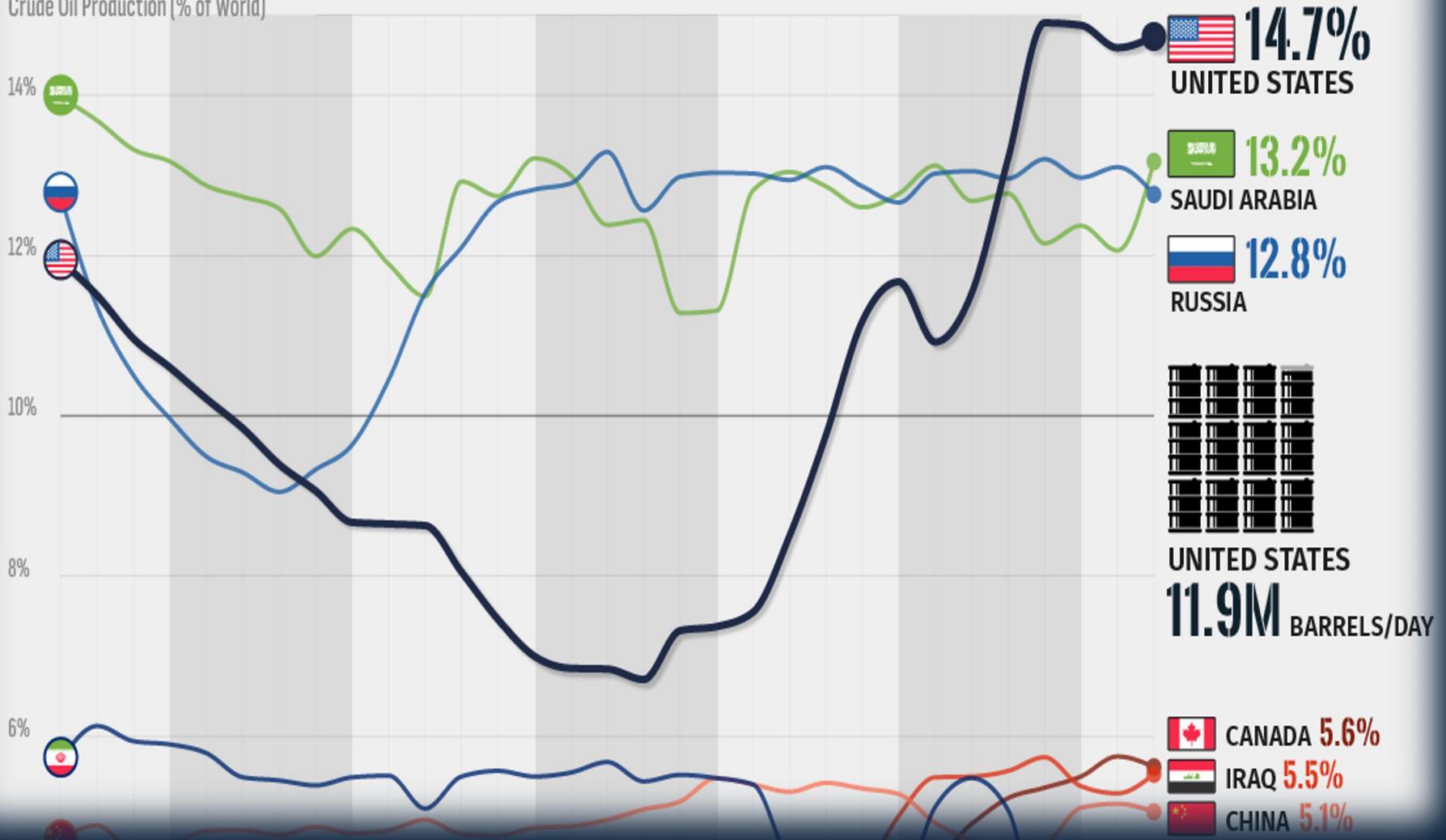
Russia



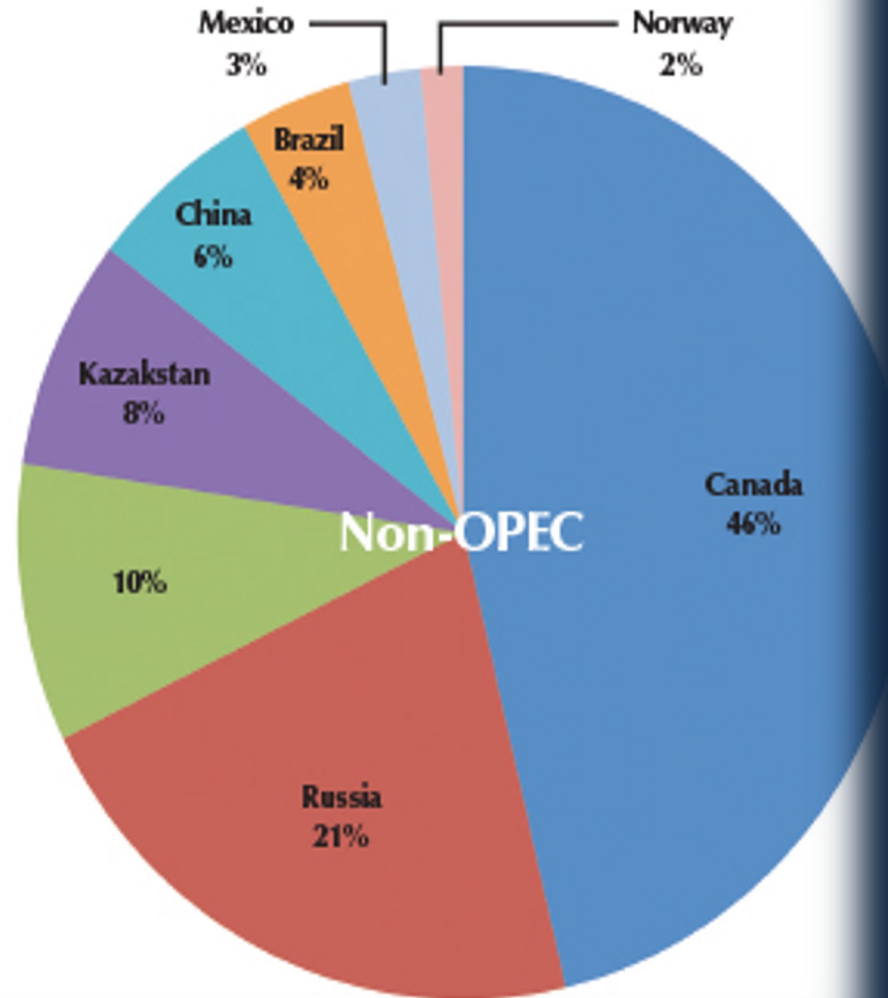
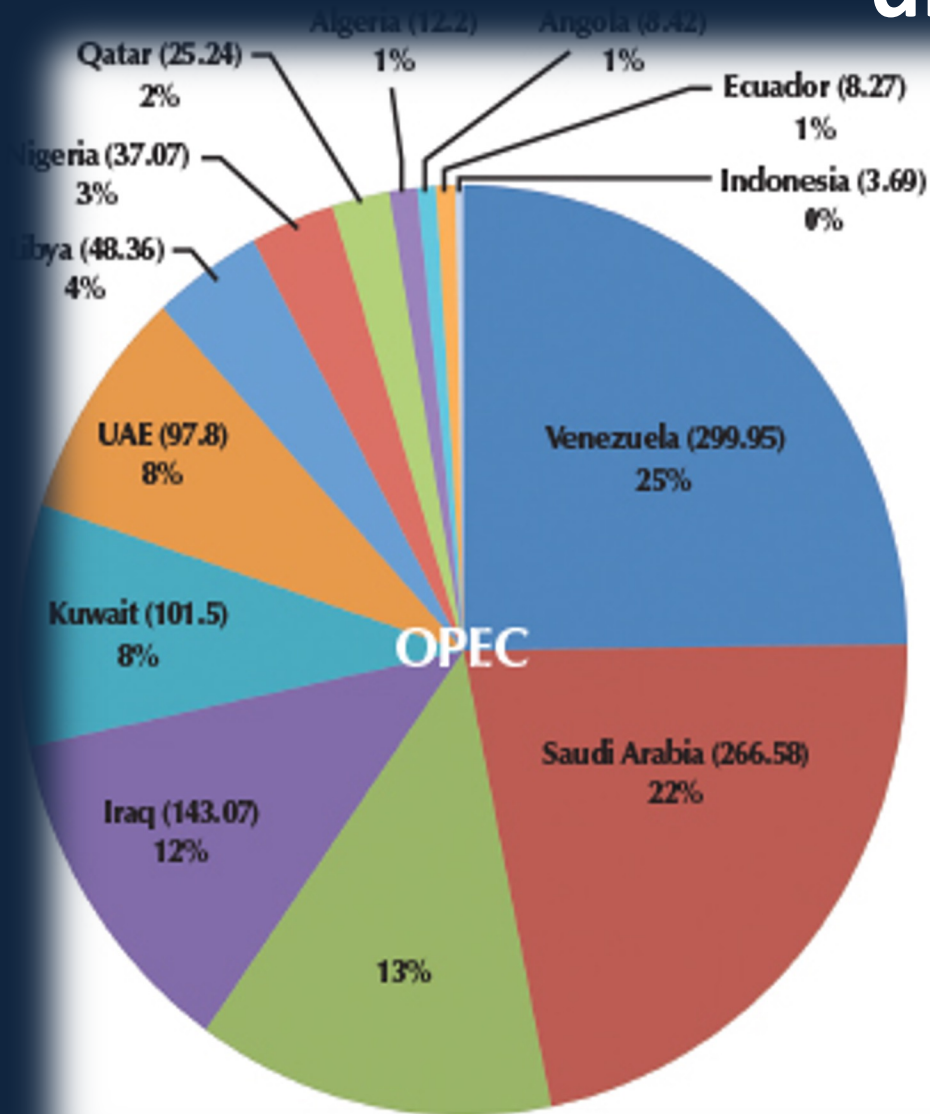
China

Viewing the world through a diplomatic lens.

Crude Oil Production (% of World)



Viewing the world through a diplomatic lens.



larger cash reserves of the world

Billion dollar



القيمة مقدرة بمليار دولار

المصدر: TradingEconomics

Viewing the world through a diplomatic lens.

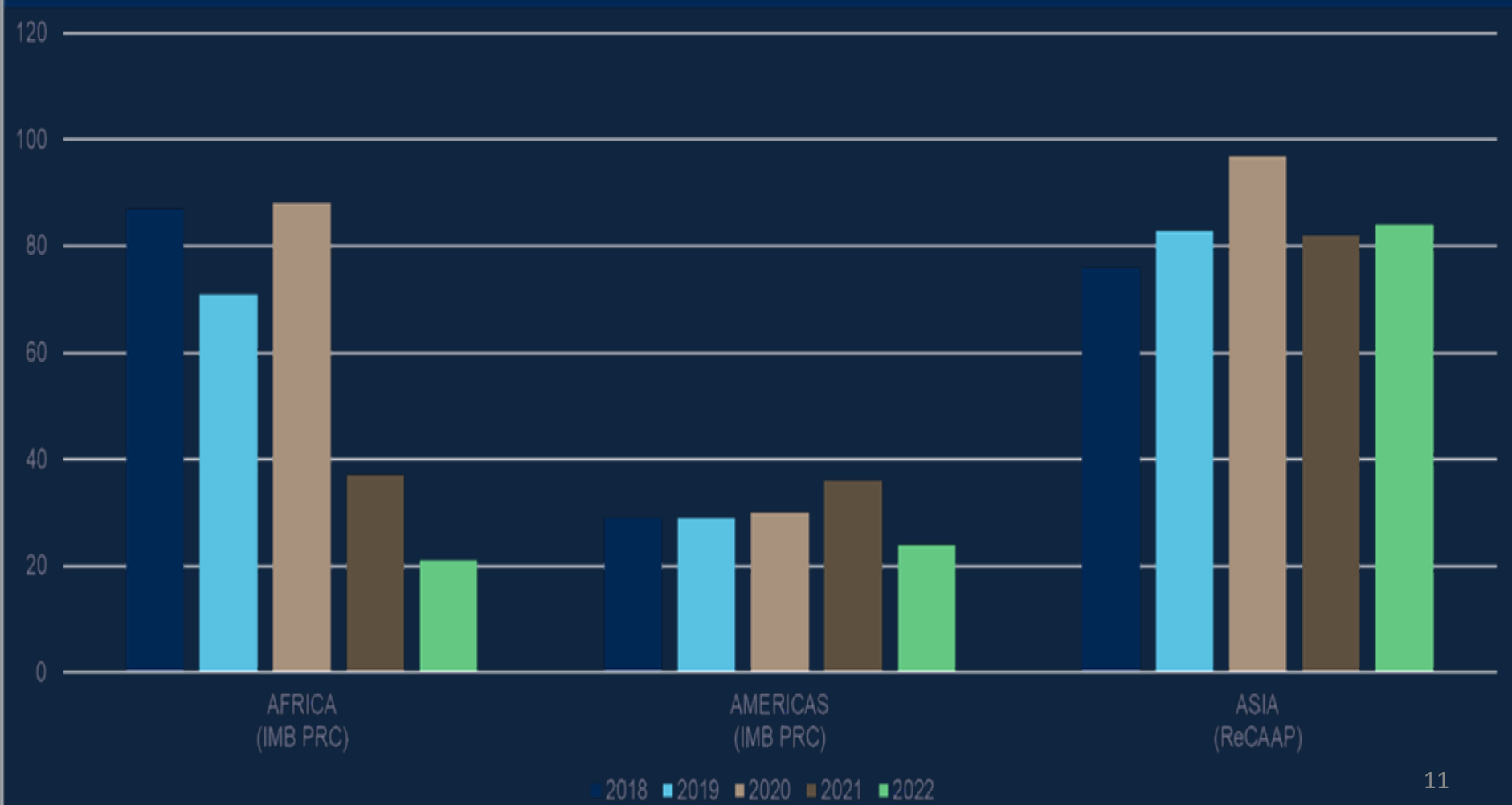


The Impact of Piracy in Maritime Supply Chain

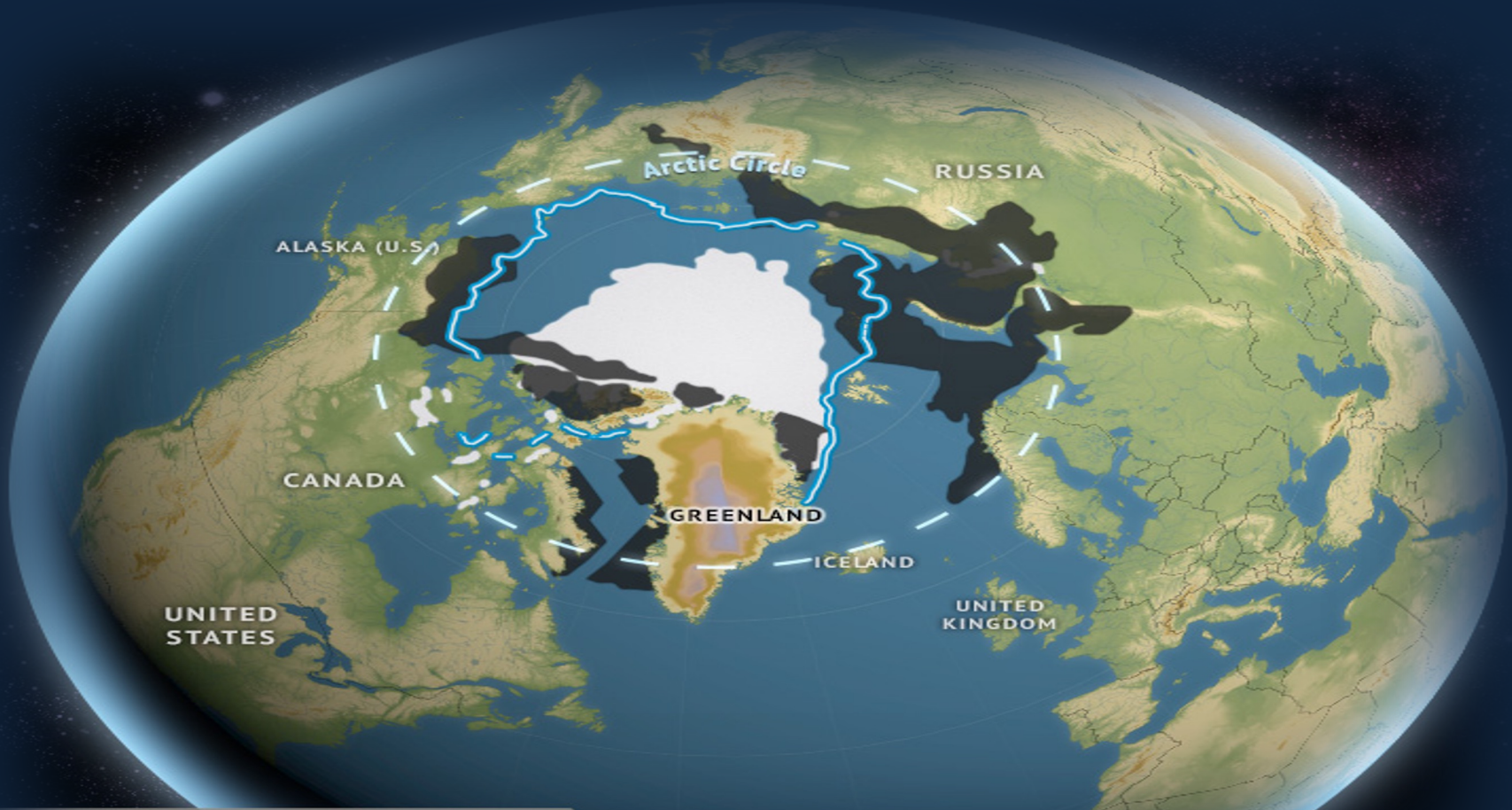


The Impact of Piracy in Maritime Supply Chain

GLOBAL PIRACY AND ARMED ROBBERY INCIDENTS



The Role of the Arctic Road in Maritime Supply Chain



Sea ice extent September 2012

September median ice edge 1979 - 2000

More than 50% probability of the presence of more than 50 million barrels of oil equivalent in undiscovered oil/gas fields

The Role of the Arctic Road in Maritime Supply Chain



Via the Suez Canal

- 6,400 nautical miles (12,000 km)
- 14 days

Around Africa

- 11,300 nautical miles (20,900 km)
- 24 days

• **The shortcut reduces the distance by 43%**

Cape of Good Hope

The Role of the Arctic Road in Maritime Supply Chain

1. Comparison NSR with SSR

Vessel type*

- Oil tanker: 320K ton
- Container ship: 8,500 TEU, 100K ton

Vessel speed*

- Oil tanker: 16 knot
- Container ship: 26 knot

Fuel consumption*

- Oil tanker: 111 ton MFO/day
- Container ship: 245 ton MFO/day

SSR

Distance **10,754 nm**

Time

Oil tanker: **28 days**
 Container ship: **18 days**

Fuel

Oil tanker: **3,108 ton MFO**
 Container ship: **4,410 ton MFO**



NSR

Distance **6,857 nm**

Time

Oil tanker: **18 days**
 Container ship: **11 days**

Fuel

Oil tanker: **1,998 ton MFO**
 Container ship: **2,695 ton MFO**



Thanks for watching

Chouliaras Theodore
CEO