

# What defines the “I” in AI ?

Ioannis Sideris, Senior Sales Manager, Weathernews Inc.  
3rd CSN Greece ICT Conference.  
Thursday, 21st of November.



## What is AI?

*Artificial intelligence (AI), in its broadest sense, is **intelligence** exhibited by machines, particularly computer systems*

## Is AI good or bad?

*Although experts typically list AI's ability to free people from repetitive and mundane tasks as a positive, some believe this particular benefit comes with a downside: a loss of skills in people.*

## Why do we need AI?

*Improved accuracy and decision-making: AI augments human intelligence with rich analytics and pattern prediction capabilities to improve the quality, effectiveness, and creativity of employee decisions.*



## This is Ameca, a humanoid robot in the Museum of the Future, Dubai.

- Tracks movement
- Facial recognition
- Wants people to ask it questions
- Apologizes if it doesn't have a good answer

**Q:** "Ameca, what will be the weather forecast for tomorrow in Dubai?"

**A:** "Sorry, I'm unable to provide real-time weather forecasts. However, you can check a reliable weather website"

**Q:** "Ameca, what is the expected forecast for Tropical Cyclone Lane?"

**A:** "I'm sorry, I recommend checking the latest updates from reliable meteorological sources to get a precise answer"



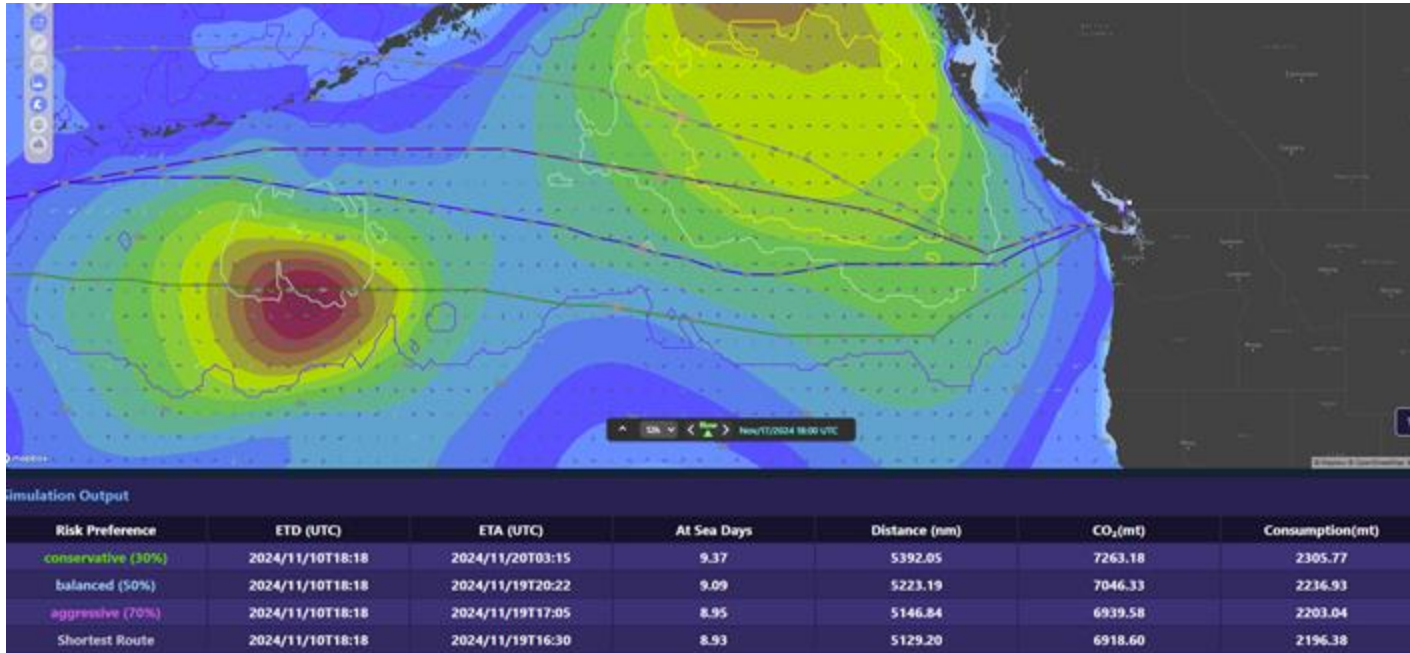
*“What AI and machine learning allows you to do is find the needle in the haystack.”*

**Bob Work**



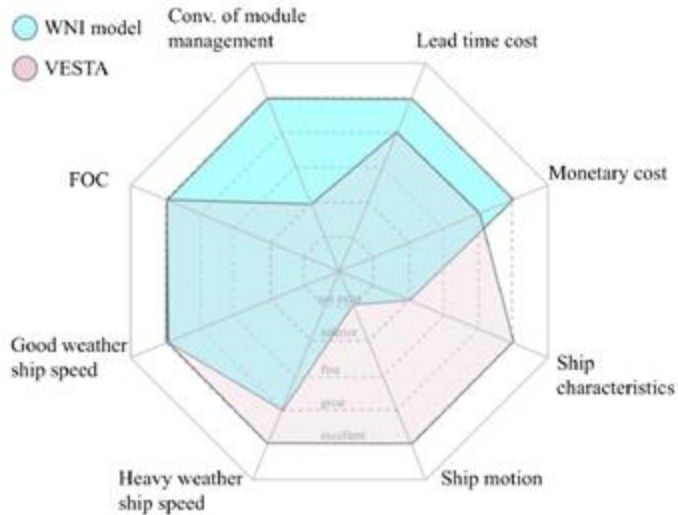
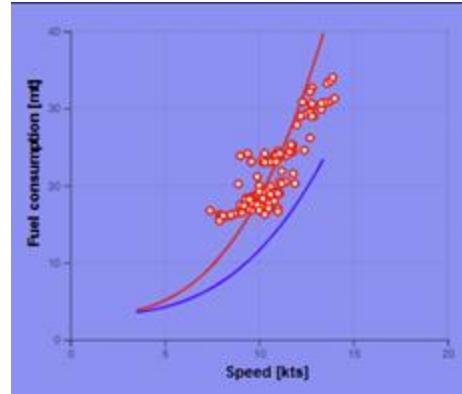
## How we implement AI to our Industry?

Looking for the best performer in the market and generating new routes can help companies plan their voyages more efficiently. With our Weather probability forecast and the help of AI machine power, all these different scenarios can be calculated easily for fast decision making.



# How we implement AI to our Industry?

Typical performance analysis of a vessel based on ship's reported data (FOC, Speed, RPM etc)



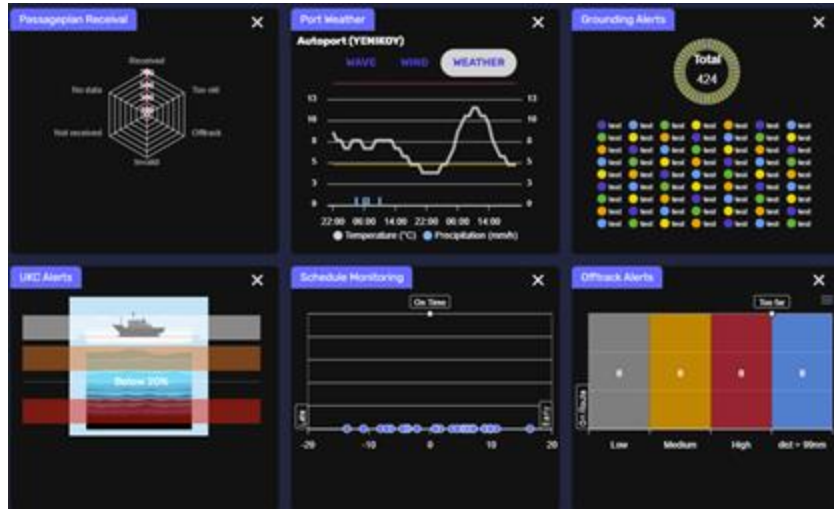
VESTA model uses ship's motion and characteristics for a more accurate performance evaluation.



# How we implement AI to our Industry?

## Off-track alerts (latest position) Warning: 4

IMO / Vessel Name	Vessel latest position (Lat. / Long.)	Latest position rep. time (UTC)	Route Type	Off track distance at latest position (NM)
	5° 25.1'S 80° 28.1'E	Nov/10/2024 17:23	OSR	45.601 (Warning)
	13° 22.1'S 60° 26.8'E	Nov/10/2024 16:41	OSR	17.433 (Warning)
	6° 4.4'N 107° 7.9'E	Nov/10/2024 17:31	OSR	15.468 (Warning)
	25° 38.8'N 55° 10.4'E	Nov/10/2024 17:40	OSR	11.088 (Warning)



AI power enables us to provide real time alerts for all fleet sizes, with notifications like off-track alerts, laycan schedule, UKC alerts, grounding and many more.



AI can help us find the needle in the haystack. We just need to describe it well enough.





# Thank you!

Visit [sea.weathernews.com](https://sea.weathernews.com)

